



Budbrooke Parish Council

Hampton Magna Yellow Lines Proposed Plan

Version 1 June 2026

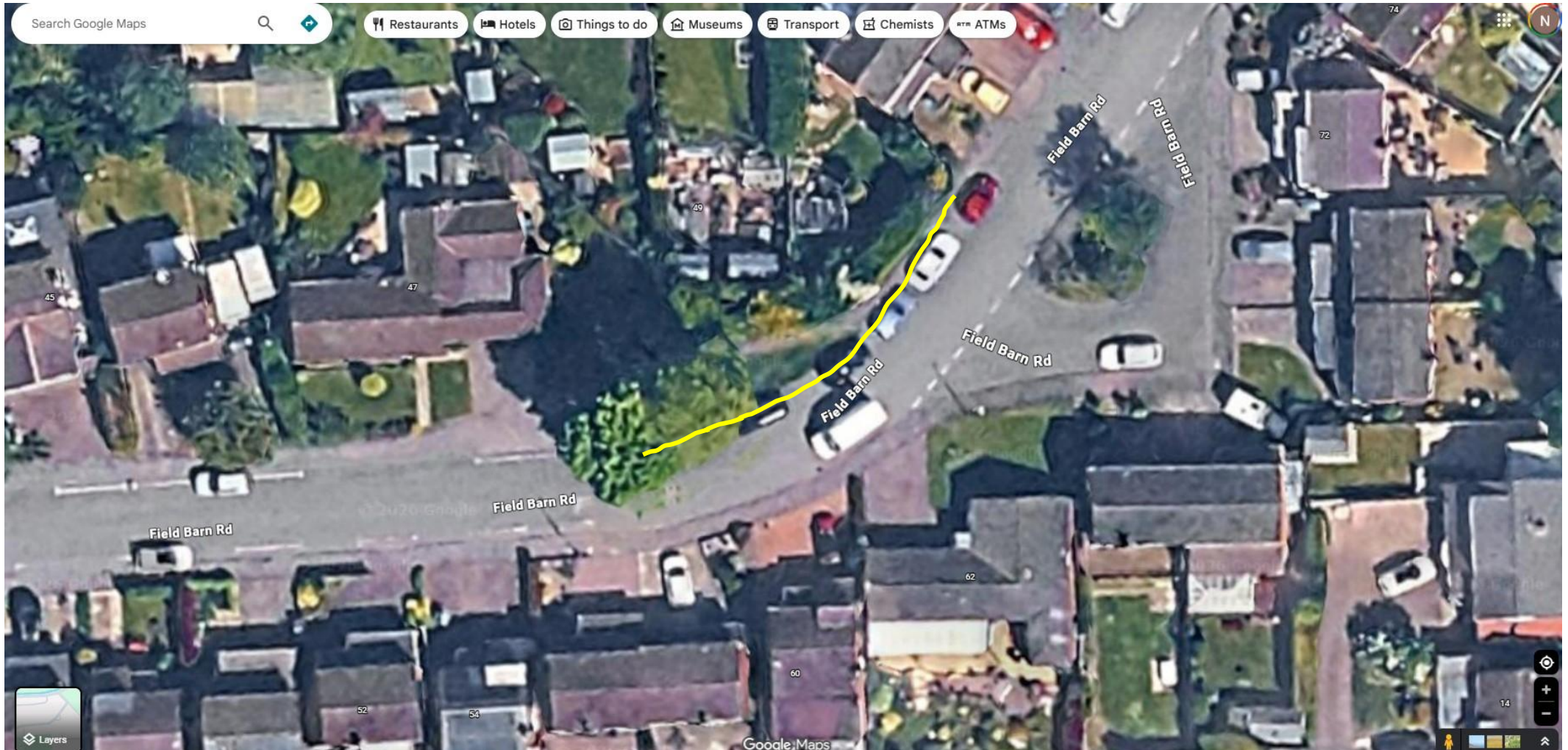
Created by Councillor Neil Bland please feedback to [parking@budbrooke-pc.gov.uk](mailto:parking@budbrooke-pc.gov.uk)



Area 1 – East part of Field Barn Road – Single Yellow Lines with timing restrictions e.g. 10-11am and 2-3pm

Reasoning – Cars parked on North of road significantly obstruct the view of cars travelling in both directions.

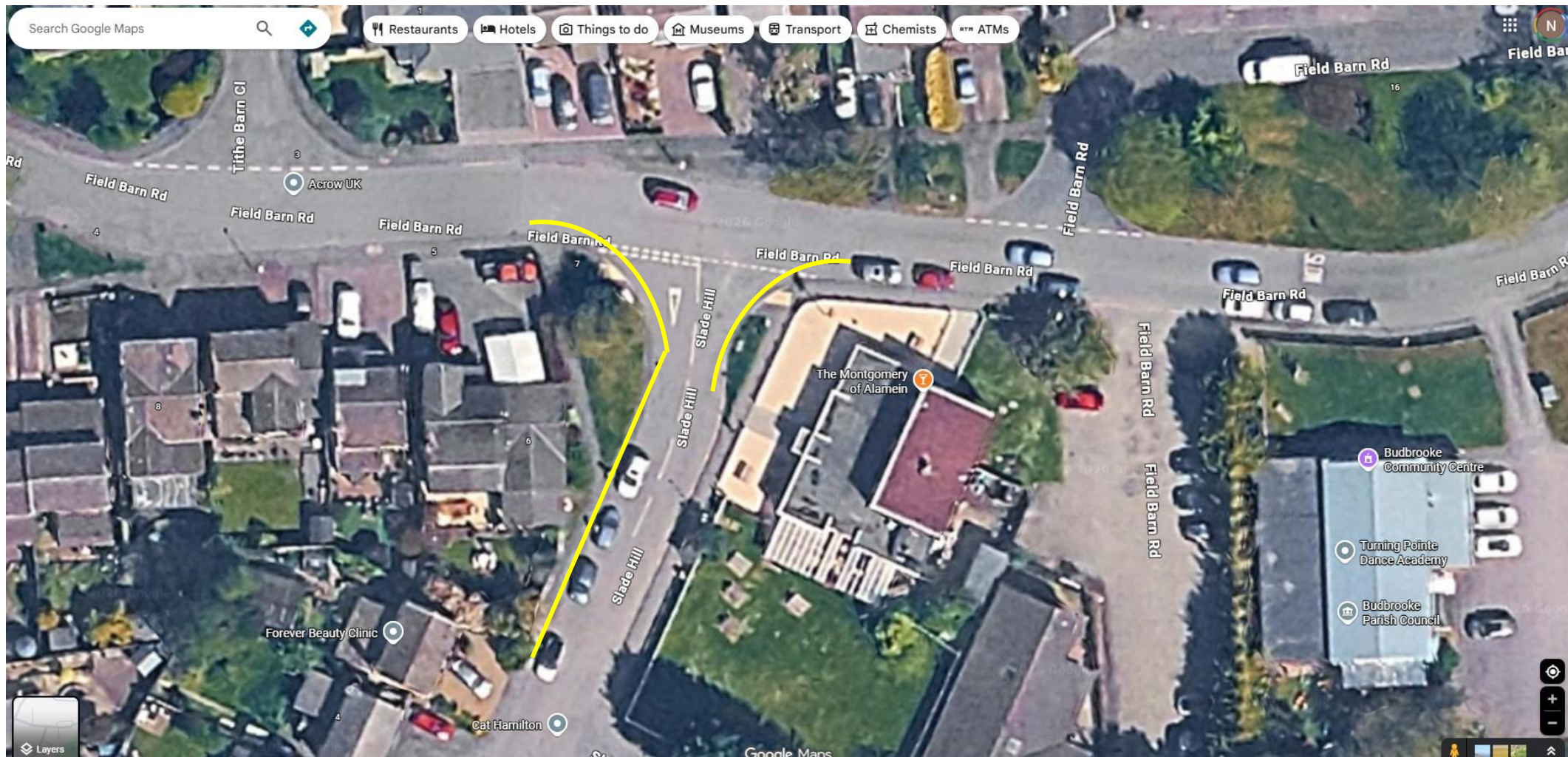
Approx dimensions – from the dropped curb of No. 47 to the end of the hedge of No. 67.



## Area 2 – Intersection of Field Barn Road and Slade Hill – Double Yellow Lines

Reasoning – Cars parked on South of road significantly obstruct the view of cars pulling out of Slade Hill and vice versa.

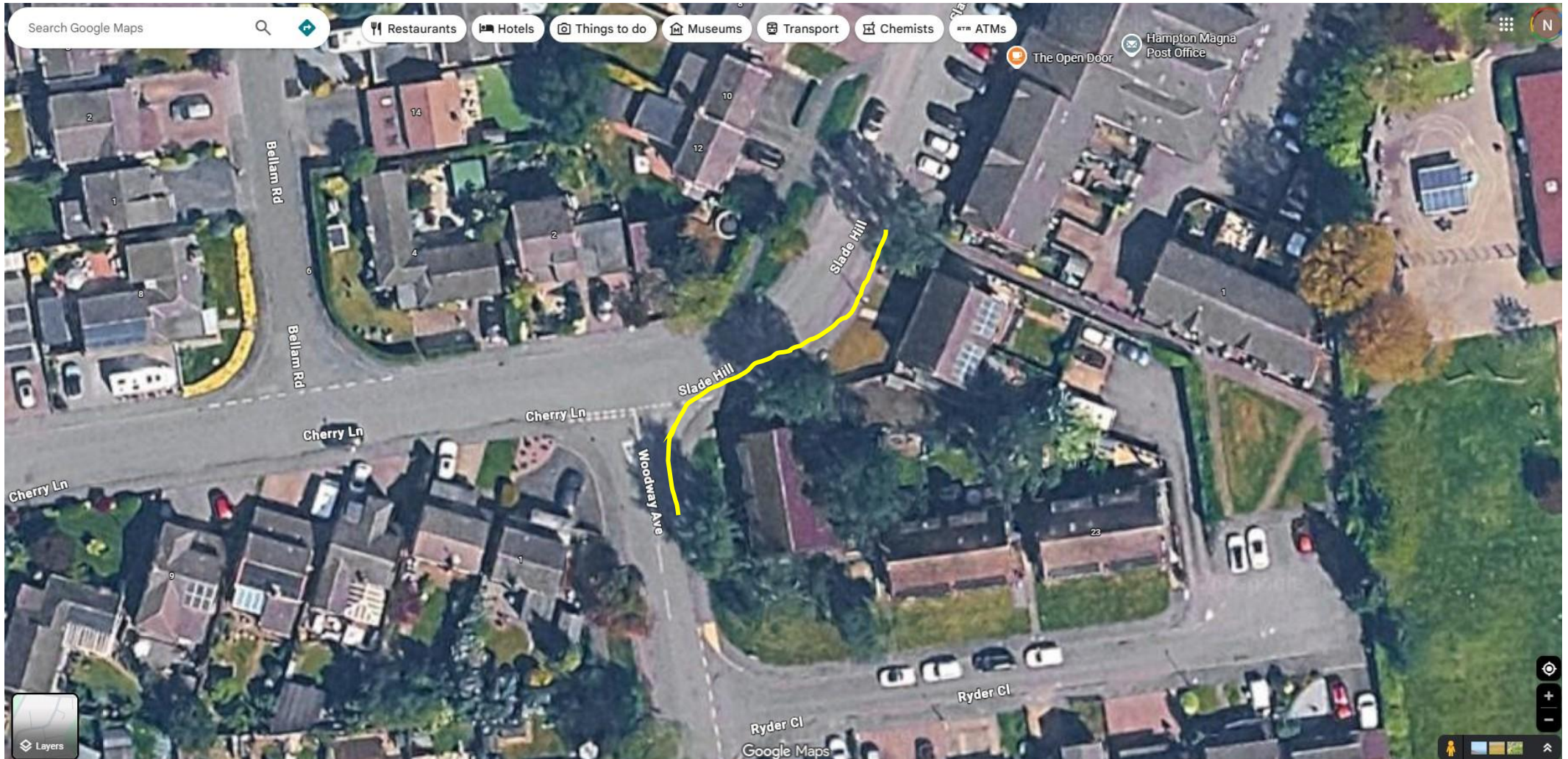
Approx dimensions – from the Bus Stop outside the Pub, round the corner and circa 10m from the last dotted white give way line. Also, approximately symmetrical on the other side extending to the dropped curb of No. 2



Area 3 – Intersection of Slade Hill and Woodway Avenue – Double yellow Lines

Reasoning – Cars parked on South East of road significantly obstruct the view of cars pulling out of Woodway Avenue and cars travelling South on Slade Hill and vice versa.

Approx dimensions – From dropped curb at the south end of the car parking space to circa 10m Woodway Avenue



Area 3 continued – Intersection of Slade Hill and Woodway Avenue

Reasoning – Cars parked half on Pavement create a significant problem for pedestrians using mobility aids and pushchairs

